

HALF FRONT ELEVATION OF WIDENED ABUTMENT  
Showing reinforcing in front face of abutment

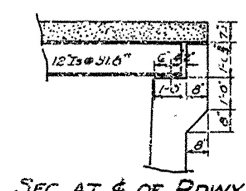
**GENERAL NOTES**

All concrete to be Class A. All exposed corners to have 1" chamfers unless otherwise noted.

Dimensions relative to present structure are general only. Detailed dimensions are to be secured and verified in field before construction is begun and before shop drawings of reinforcing steel are made.

Payment for file drains to be included in price bid for Class A Concrete.

For details of superstructure see Drawing No. 79.50



SEC. 47 & OF RDWY

DETAILS OF WIDENING OF ABUTMENTS No. 1 & 2  
BRIDGE No. 2286  
ALMA-MULBERRY ROAD  
CRAWFORD COUNTY  
ROUTE SEC.

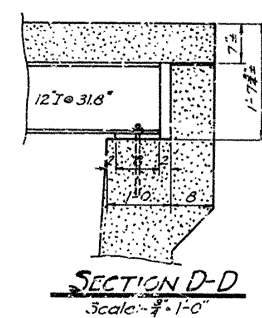
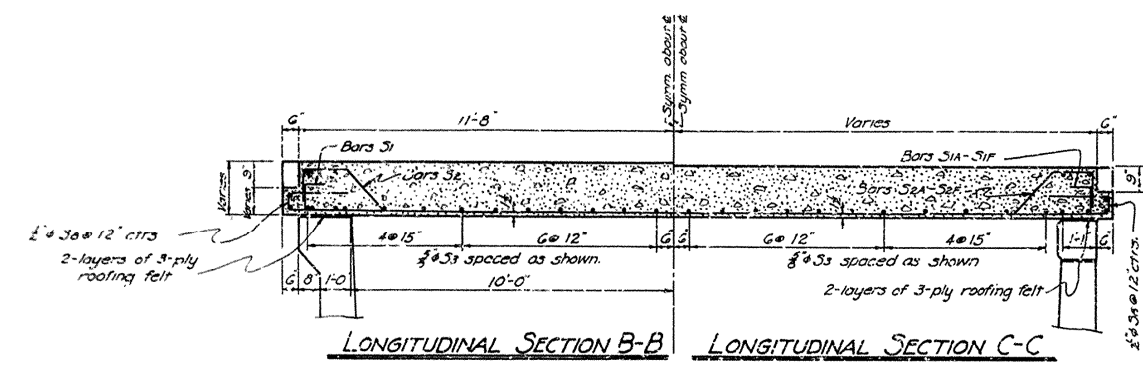
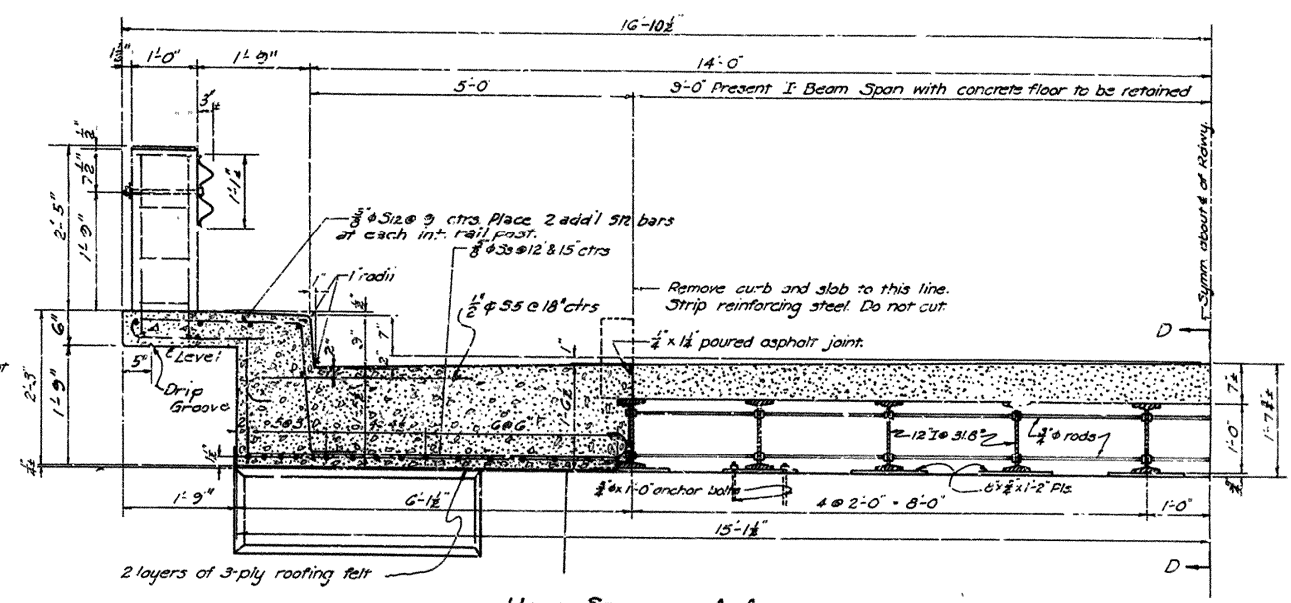
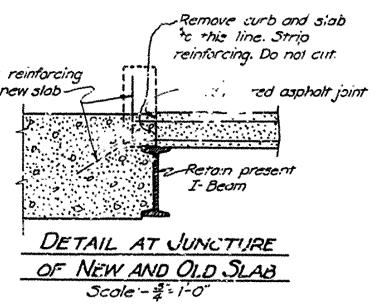
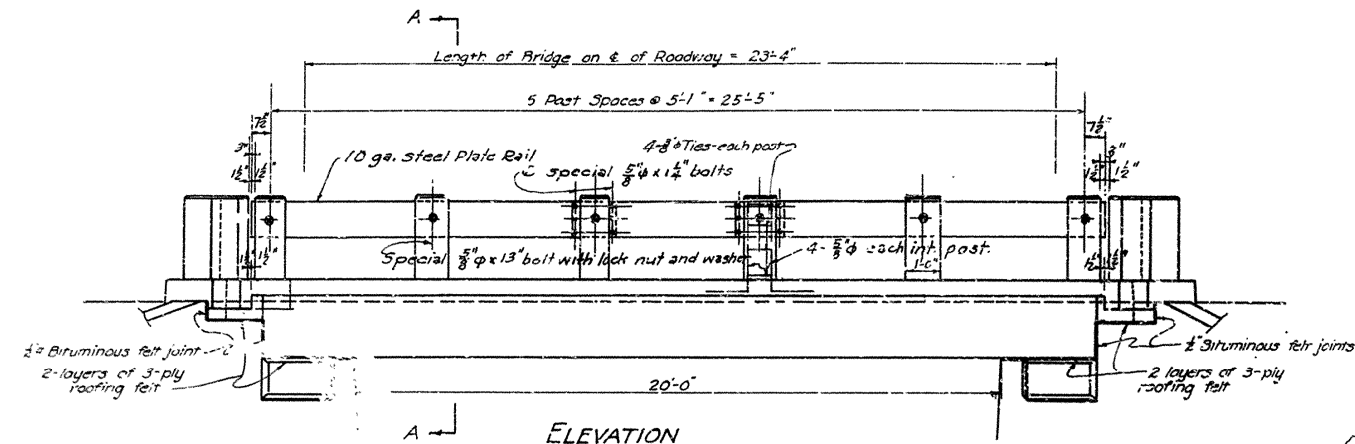
ARKANSAS STATE HIGHWAY COMMISSION  
LITTLE ROCK, ARK.

Drawn By: WCH Date: 5-16-42  
Traced By: MWH Date: 3-20-42  
Checked By: \_\_\_\_\_ Date: \_\_\_\_\_

Scale: 3/4" = 1'-0"

BRIDGE NO. 2286 DRAWING NO. 7943

RD. ROAD DIST. NO.	STATE	PROJECT NO.	FISCAL YEAR	SHEET NO.	TOTAL SHEETS
5	ARK.				
STAT. JOB NO. 4275 1951 16 21					



### GENERAL NOTES

All concrete to be Class 3. All exposed corners to have 2" chamfers unless otherwise noted.

Reinforcing steel to be deformed bars of structural or intermediate grade. Shop drawings and bending diagrams must be submitted and approved before construction is begun.

Pay for poured asphalt joint, roofing felt, and bituminous felt to be included in the price bid for Class 3 Concrete.

Dimensions relative to present structure are general only. Detailed dimensions are to be secured and verified in the field before bar lists for reinforcing are made and construction is begun.

Payment for cutting off old concrete curbs and portion of slab; cutting off present steel handrail; cleaning and painting old structural steel shall be included in Lump Sum Bid for Remodeling of Existing Bridges.

Payment for slab bar bolsters and high chairs shall be included in the price bid for Reinforcing Steel.

SPECIFICATIONS - Arkansas State Highway Commission Standard Specifications for Road and Bridge Construction, adopted March, 1940.

The steel plate guard rail shall be of the type shown or an equivalent rigid type as approved by the Engineer, and shall be painted the same as structural steel under Section 507. Guard rail, including concrete posts, post reinforcing steel, and fastenings, shall be paid for at the unit price per linear foot bid for Steel Plate Guard Rail.

### DESIGN LIVE LOAD - H-20 LOADING A.S.H.O. 1941

Load distribution to sidewalk girder - Dead Load 770 lb./lin. ft.  
Live Load 0.30 Wheel 30% Impact

Load distribution to roadway slab - Dead Load 235 lb./lin. ft.  
Live Load 0.167 Wheel 30% Impact

### UNIT STRESSES

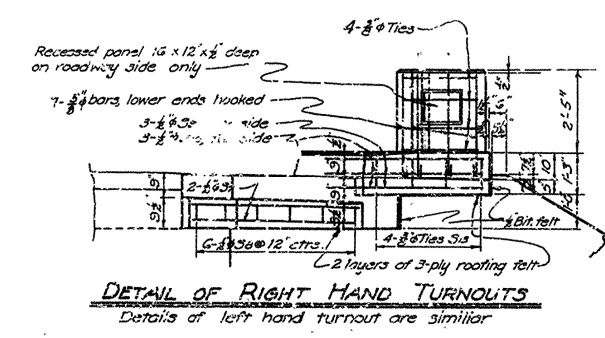
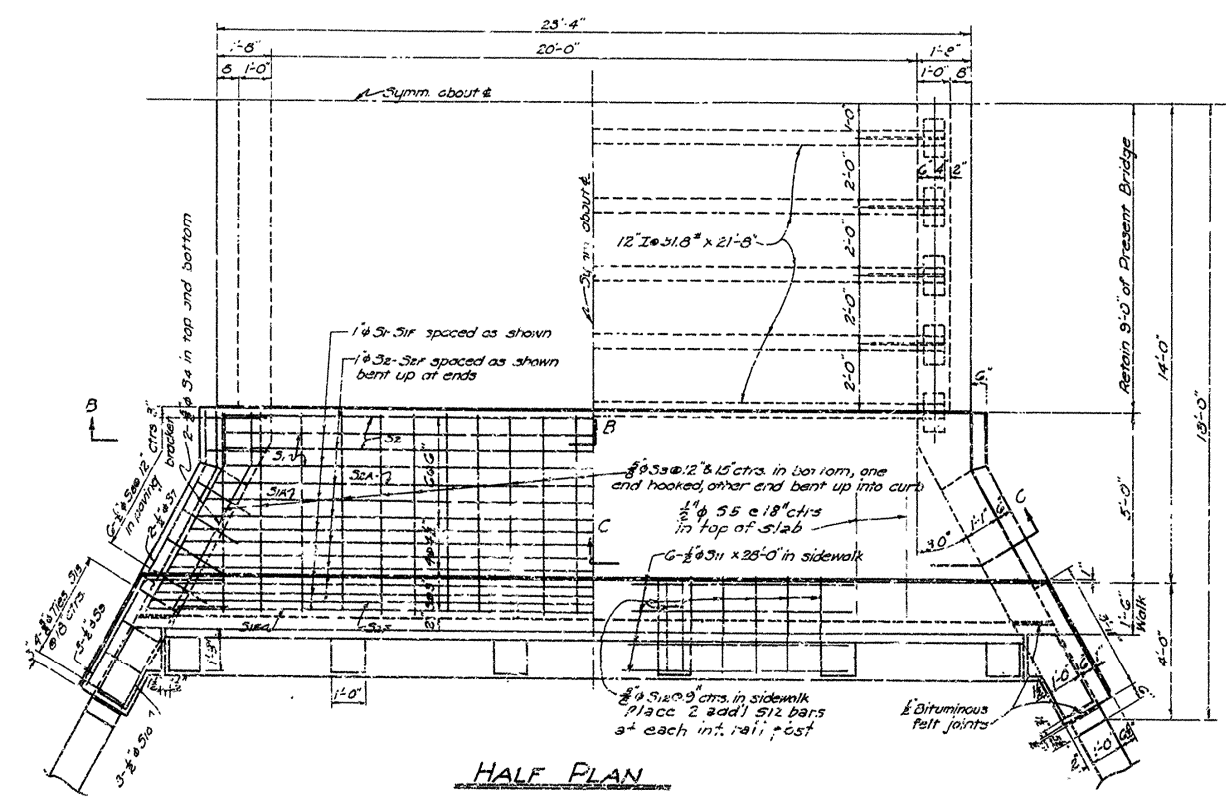
Class 3 Concrete (n=10) 1,000 psi  
Reinforcing Steel 18,000 psi  
Structural Steel (old) 18,000 psi

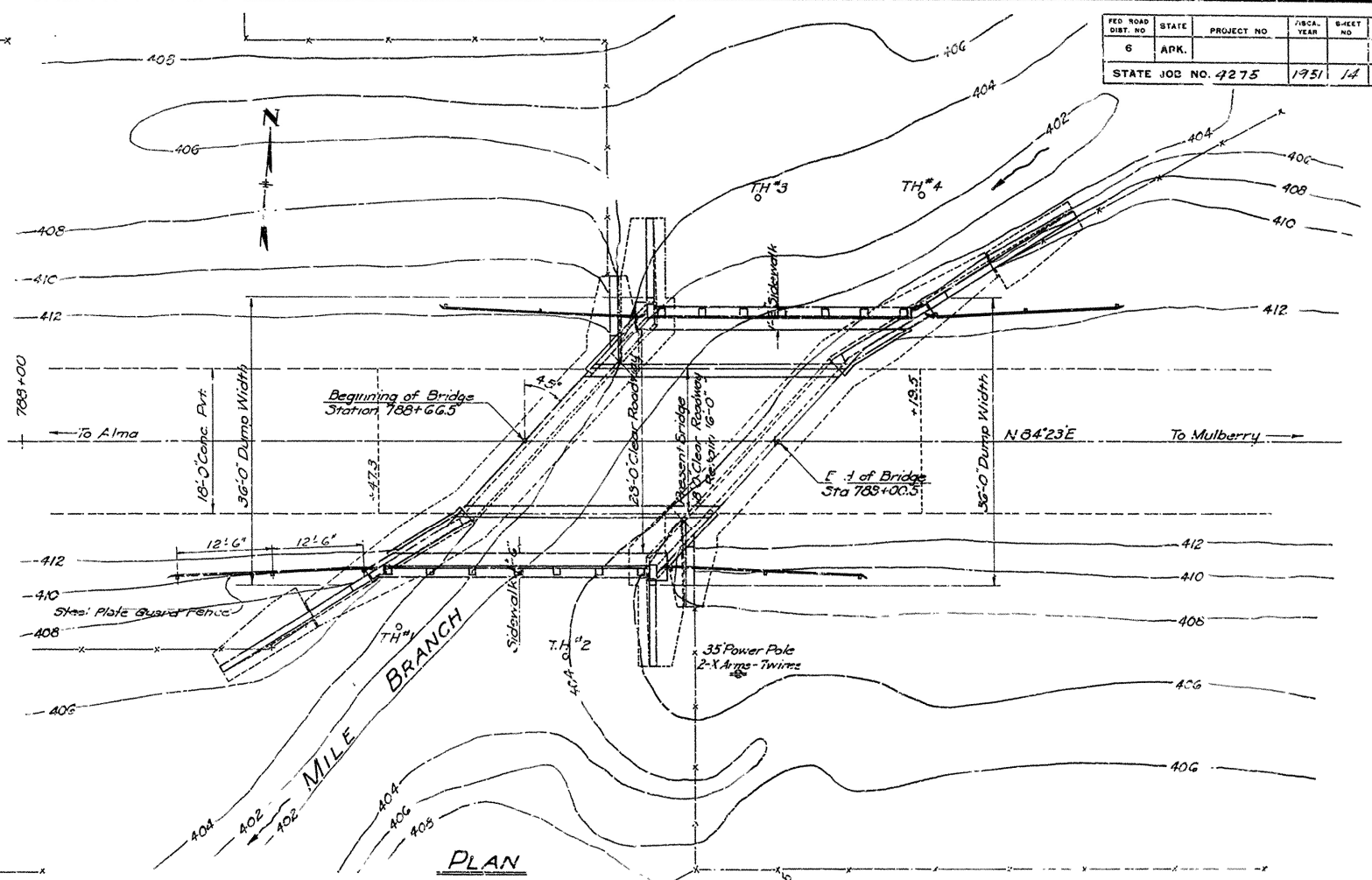
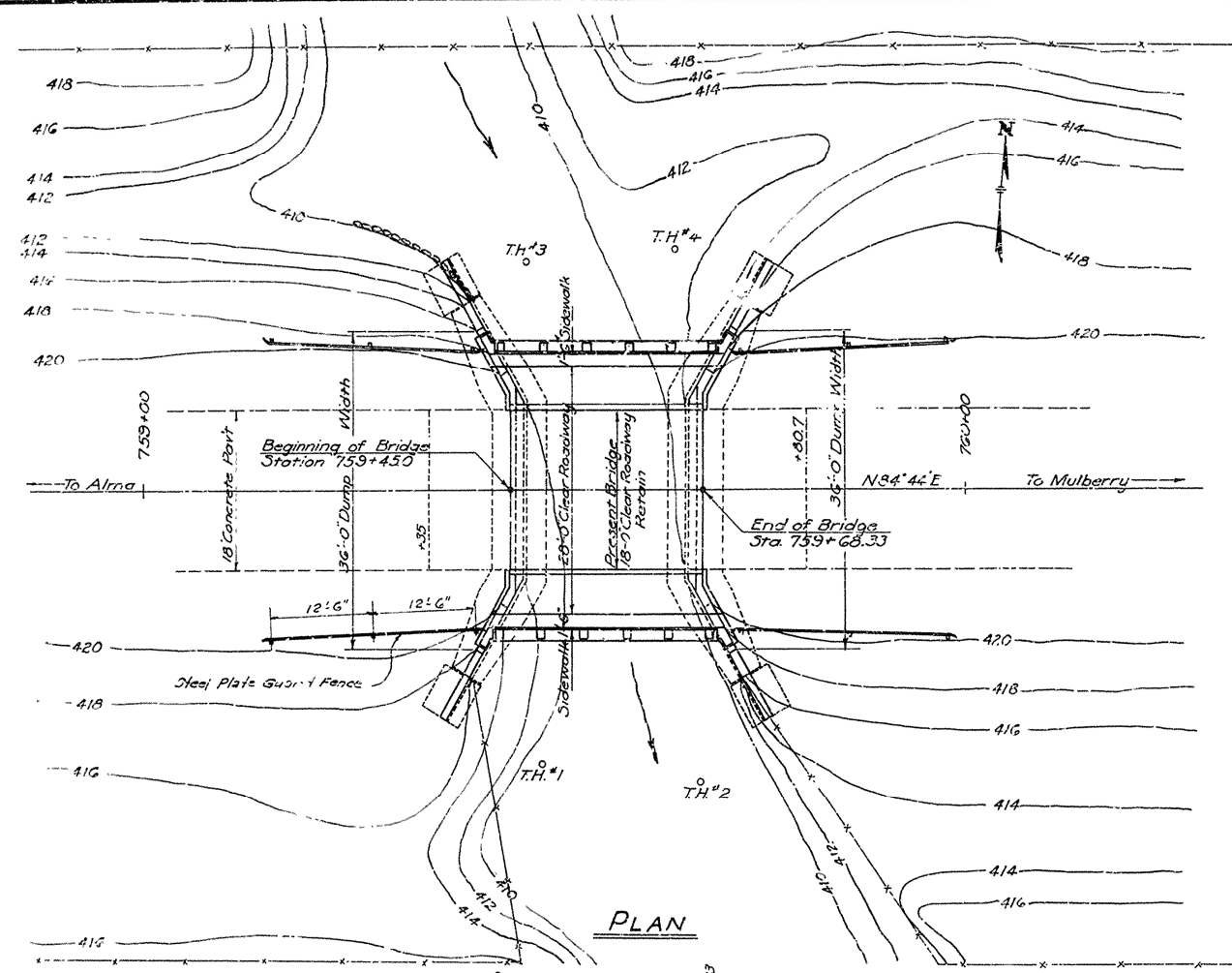
MARK	SIZE	No. RECD.	LENGTH	A	B	BENDING DIAGRAM
S1	1" x 8"	4	25'-10"	25'-0"		
S1A	1" x 8"	2	26'-11"	24'-1"		
S1B	1" x 8"	2	27'-11"	25'-1"		
S1C	1" x 8"	2	28'-3"	25'-11"		
S1D	1" x 8"	2	29'-6"	26'-8"		
S1E	1" x 8"	2	30'-1"	27'-3"		
S1F	1" x 8"	2	30'-8"	27'-10"		
S2	1" x 8"	4	25'-7"	18'-3"		
S2A	1" x 8"	2	26'-1"	18'-5"		
S2B	1" x 8"	2	27'-5"	19'-10"		
S2C	1" x 8"	2	28'-1"	20'-8"		
S2D	1" x 8"	2	28'-11"	21'-6"		
S2E	1" x 8"	2	29'-6"	22'-1"		
S2F	1" x 8"	2	30'-1"	22'-8"		
S3	3/4" x 11"	44	3'-6"			
S3A	3/4" x 11"	16	5'-6"	4'-10"		
S3B	3/4" x 11"	36	4'-0"			
S3C	3/4" x 11"	10	4'-0"			
S3D	3/4" x 11"	8	5'-2"	3'-8"		
S3E	3/4" x 11"	24	4'-5"	2'-0"		
S3F	3/4" x 11"	12	6'-0"	3'-7"		
S3G	3/4" x 11"	12	5'-0"	3'-3"		
S3H	3/4" x 11"	12	28'-0"	Straight		
S3I	3/4" x 11"	100	6'-7"			
S3J	3/4" x 11"	16	5'-0"			

NOTE: Dimensions relating to reinforcing steel are to center of bars.

DETAILS OF WIDENING SUPERSTRUCTURE  
BRIDGE No. 2286  
ALMA-MULBERRY ROAD  
CRAWFORD COUNTY  
ROUTE 64 SEC. 2

ARKANSAS STATE HIGHWAY COMMISSION  
LITTLE ROCK, ARK.  
Drawn By: WCH Date: 3-17-48  
Traced By: MWH Date: 3-24-48  
Checked By: Date:  
BRIDGE No. 2286 DRAWING NO. 7950





PLAN

PLAN

GENERAL NOTES

Dimensions relative to present structure are general only. Detailed dimensions are to be secured and verified in field before construction is begun and before shop drawings for reinforcing and structural steel are made.

All concrete to be poured in the dry. All exposed corners are to be chamfered  $\frac{3}{4}$ ".

Rock excavation shall be made to neat lines of concrete footings. Care shall be taken to avoid shattering of rock faces by excessive blasting.

In general all construction joints in new work of abutments shall be horizontal and shall be provided with keys not less than 2' deep and covering the middle 3rd of both dimensions.

Reinforcing steel to be deformed bars of structural or intermediate grade. Shop lists and bending diagrams must be submitted and approved before fabrication is begun.

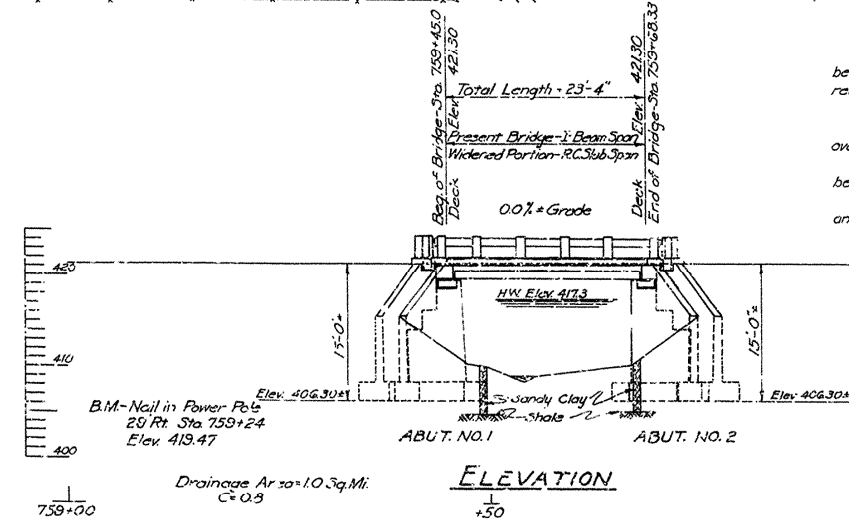
For details of Abutments No. 1 & 2 of Bridge No. 2286, see Drawing No. 7949.

For details of Superstructure of Bridge No. 2286, see Drawing No. 7950.

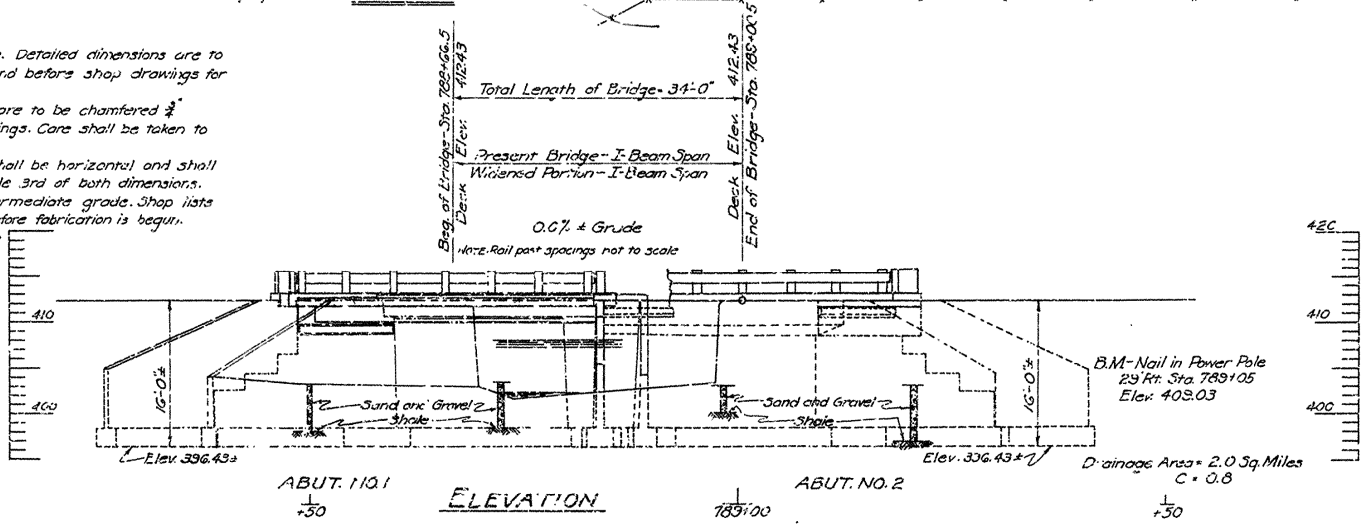
For details of Abutments No. 1 & 2 of Bridge No. 2287, see Drawing No. 7951.

For details of Superstructure of Bridge No. 2287, see Drawing No. 7952.

SPECIFICATIONS: Arkansas State Highway Commission Standard Specifications for Road and Bridge Construction, adopted March 1, 1940.



BRIDGE No. 2286



BRIDGE No. 2287

QUANTITIES FOR BRIDGE No. 2286

ITEM NO.	ITEM	QUANTITY				TOTALS	UNIT
		ABUT. NO. 1	SPAN	ABUT. NO. 2			
103	Dry Excavation for Structures	35	—	40	75		Cu.Yd.
103	Wet Excavation for Structures	19	—	19	38		Cu.Yd.
103	Solid Rock Excav. for Structures	—	—	—	—		Cu.Yd.
SP8801	Class 'A' Concrete for Bridges	11.6	—	11.6	23.2		Cu.Yd.
SP8802	Class 'B' Concrete for Bridges	—	22.3	—	22.3		Cu.Yd.
803	Reinforcing Steel	770	3630	770	5150		Lb.
805-3	Steel Plate Guard Rail	—	66.3	—	66.3		Lin.Ft.
S.P.	Remodeling Existing Bridges and Maintaining Traffic	—	—	—	13%		Complete

QUANTITIES FOR BRIDGE No. 2287

ITEM NO.	ITEM	QUANTITY				TOTALS	UNIT
		ABUT. NO. 1	SPAN	ABUT. NO. 2			
103	Dry Excavation for Structures	39	—	64	103		Cu.Yd.
103	Wet Excavation for Structures	50	—	55	105		Cu.Yd.
103	Solid Rock Excav. for Structures	12	—	10	22		Cu.Yd.
SP8802	Class 'A' Concrete for Bridges	34.6	—	34.6	69.2		Cu.Yd.
SP8802	Class 'B' Concrete for Bridges	—	15.0	—	15.0		Cu.Yd.
803	Reinforcing Steel	2235	2420	2235	6890		Lb.
805-3	Steel Plate Guard Rail	—	80.6	—	80.6		Lin.Ft.
SP8807	Structural Steel in Beam Spans	—	9370	—	9370		Lb.
S.P.	Remodeling Existing Bridges and Maintaining Traffic	—	—	—	13%		Complete

Revisions: Railing: Quantities, H.B. 1-3-51

LAYOUT OF BRIDGES NO 2286 & 2287  
ALMA-MULBERRY ROAD  
CRAWFORD COUNTY  
ROUTE 64 SEC. 2

ARKANSAS STATE HIGHWAY COMMISSION  
LITTLE ROCK, ARK.  
Drawn By: M.C.H. Date: 2-19-42  
Traced By: M.W.H. Date: 2-21-42  
Checked By: \_\_\_\_\_ Date: \_\_\_\_\_  
BRIDGE NO. 2286 & 2287 DRAWING NO. 7948